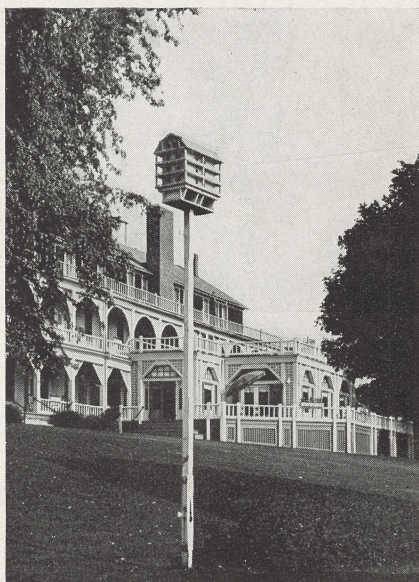


CHARLEVOIX, MICHIGAN

BELVEDERE

HOTEL



On Lake Charlevoix

DELIGHTFUL LIVING

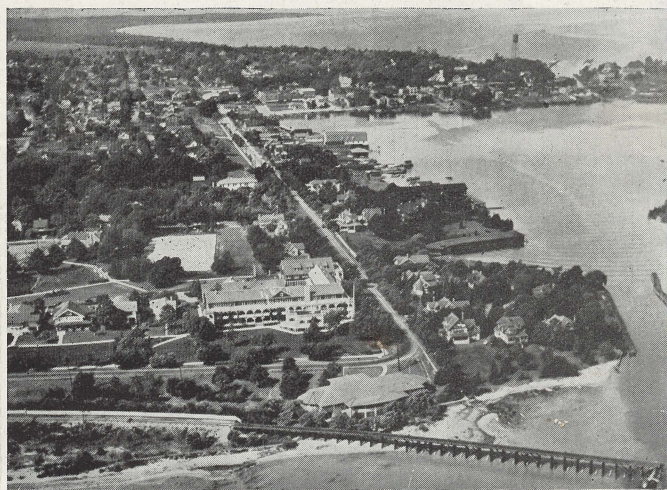
The Solarium, Lounge and Lobby, cheerful rooms beckon one to while away hours of relaxation. Our guests are made to feel warmly welcome and are quickly drawn into the informal life of the congenial groups. Daily concerts are rendered by a Trio of talented musicians.



We cater to a discriminating clientele.

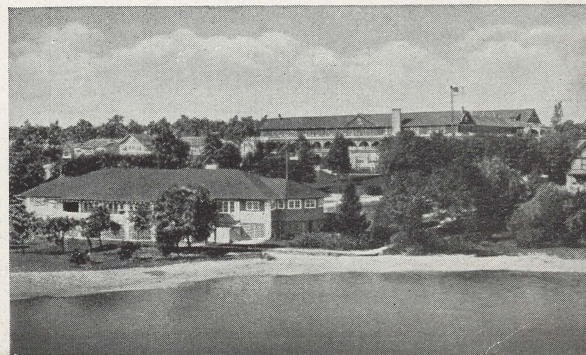


The spacious and inviting verandas offer a wonderful view of Lake Charlevoix.



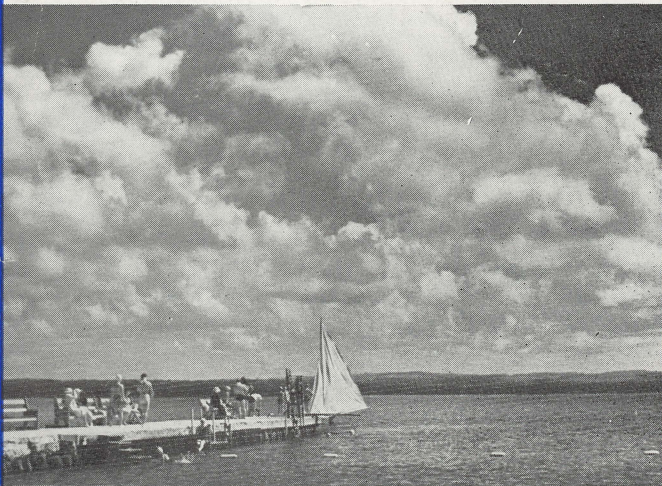
Air view of Belvedere, showing the vastness of this beauty spot. Lake Michigan in background—Round Lake, a natural land-locked harbor, in center, and Lake Charlevoix in foreground.

Belvedere Casino, with its unusually large porch, located on the shores of Lake Charlevoix, is a delightful spot for dancing and other entertainment. It has a stage and seating capacity for five hundred, making it ideal for convention meetings.



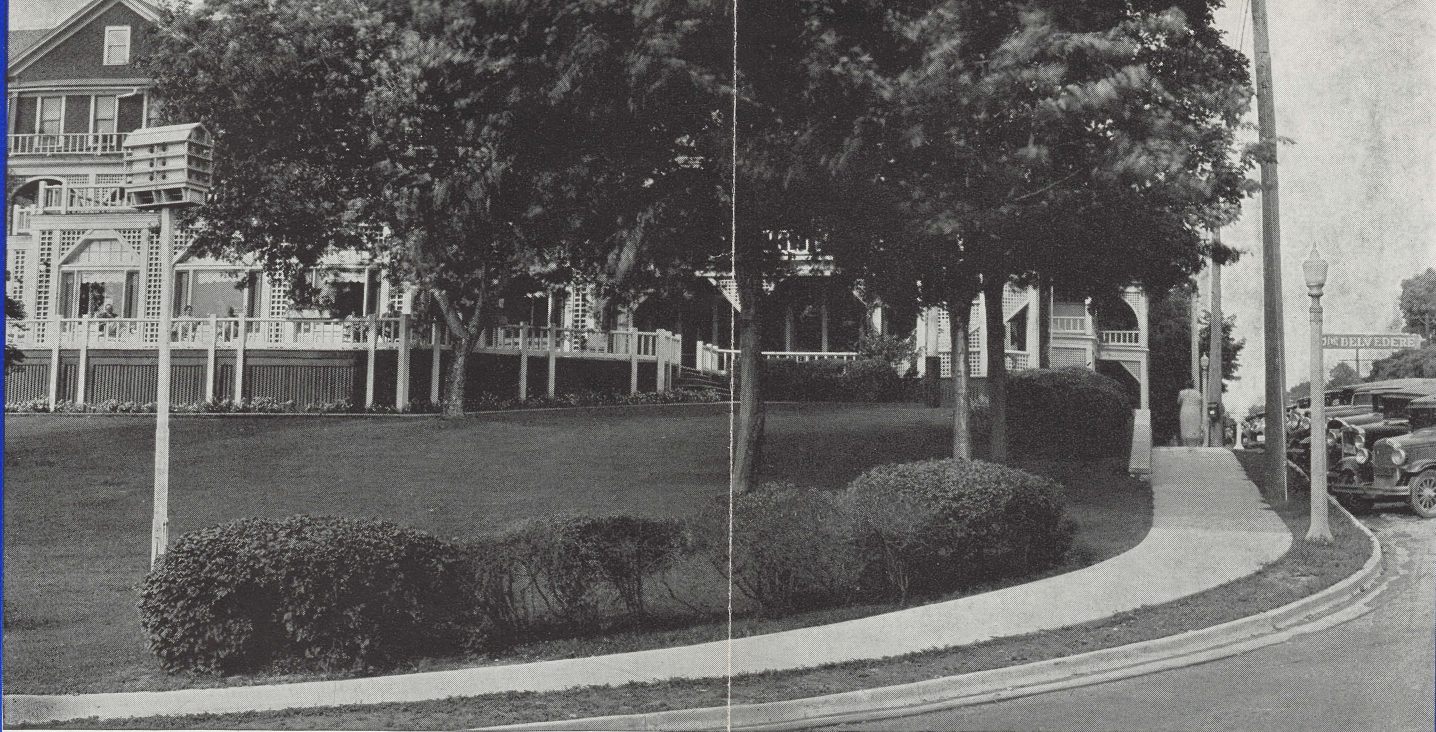


Numerous bridle paths entice the equestrians to ride often.



One may sit on the porch of the cabana, or on the fine sand beach, and enjoy the benefit of the sun's rays. The beach, ideal for children, is under supervision of a competent lifeguard. Shuffleboards are for those who do not engage in more vigorous sports.

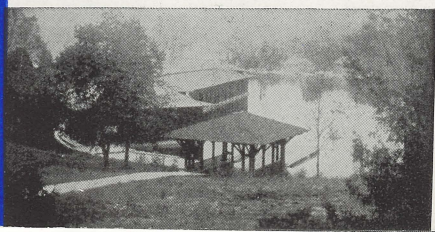




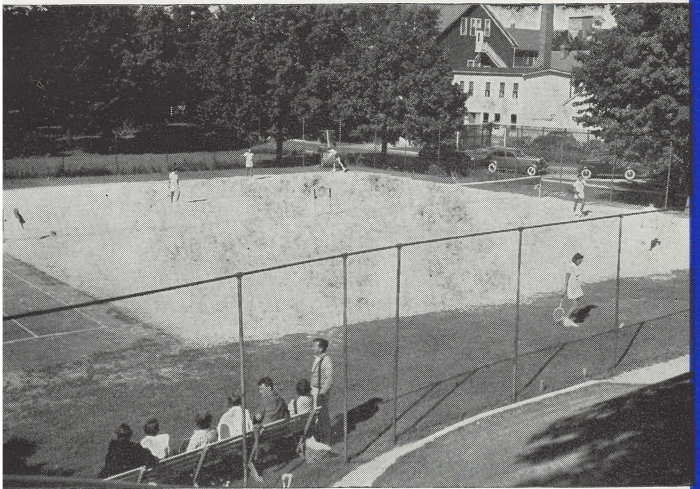
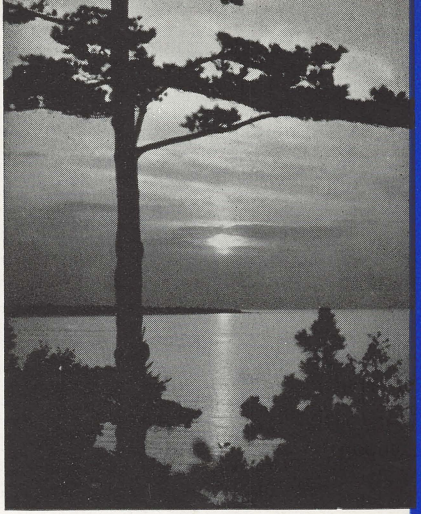
BELVEDERE HOTEL AND SURROUNDINGS

Charlevoix, with a population of 2500, is a beautiful little city on Michigan, Round and Charlevoix Lakes. The climate is invigorating and the water-washed air is ideal in affording relief to those having hay fever. Churches, moving pictures, smart shops, drug stores, fine parks, excellent doctors and a modern hospital, are within a few minutes walk of the hotel.

Boats, guides and bait are available at all times to aid the fisherman to baffle and snare the cunning bass, perch, trout (steelhead and mackinaw) which abound in the numerous lakes. Fine trout streams are nearby.



Many excellent and picturesque roads wind around the lakes, where one may drive to see the gorgeous sunsets.

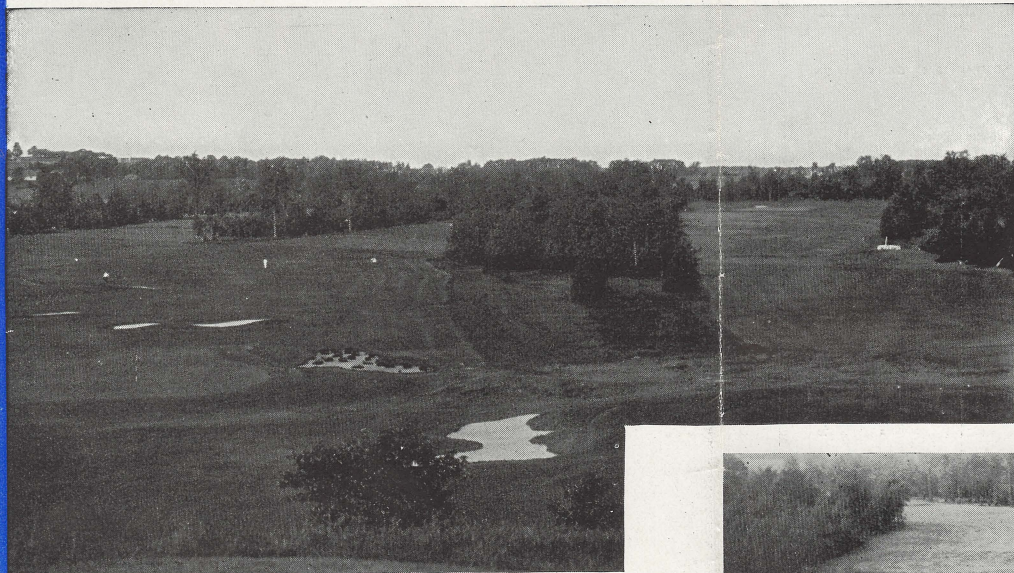


Adjacent to the hotel are six asphalt tennis courts for the free use of our guests.



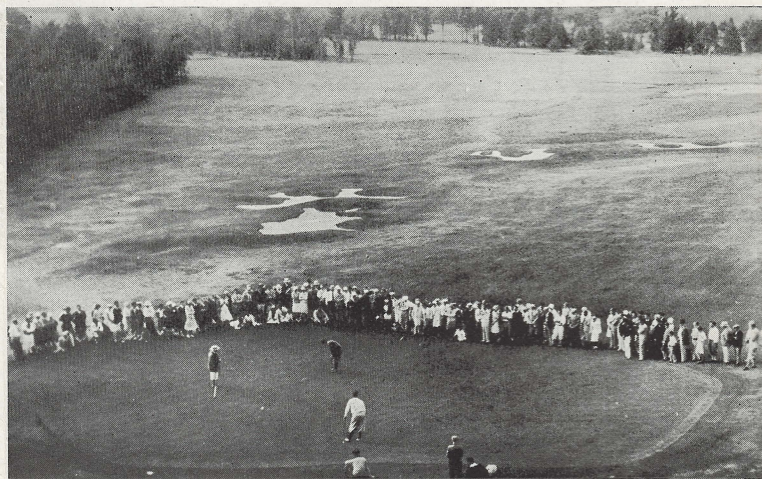
GOLF

The Belvedere 6600 yard 18 hole golf course high above the lakes is cool even on the hottest days. It is interesting and sporty. The excellent greens and fairways closely cut, traverse a rolling and diversified terrain. The holes are well trapped and the course will test the skill of the ablest golfer.



Belvedere Golf Course has been acclaimed by professionals as one of the finest resort courses in America. The Annual Tournament in August is open to them. This course is a 5 minute drive from the hotel.

The Municipal 18 hole Golf Course is quite level, inviting the more modest player. It is in a picturesque setting and is about one and a half miles from Belvedere Hotel.



A wide variety of recreational features are available to our guests.

Green velvety sloping lawns, dotted with many beds of variegated flowers, add greatly to the scenic beauty surrounding Belvedere.



NORTHERN MICHIGAN'S POPULAR RESORT

Belvedere is not an average resort hotel, but a summer residence of character and distinction. How delightful a vacation spent in a charming Hotel

surrounded by 100 acres of beautiful club grounds, with its winding walks and varicolored flowers; overlooking the blue waters of Lake Charlevoix.



The atmosphere of Belvedere is unique and it enjoys an enviable reputation for its friendliness and hospitality to all who share the abundant pleasures to be found within its realms.

The bedrooms are very comfortable. Every part of the hotel is equipped with automatic sprinklers, assuring fire protection. We have

steam heat and elevator service to all floors.

Only fresh vegetables, fruits, and the best of meats, fowls, fish, milk, butter and eggs are served. Guests come from far and near to partake of the appetizing food served in our dining room, and the Sunday evening buffet suppers are a featured attraction.

SCHEDULE OF RATES: \$6, \$7, \$8, and \$9 per day, including meals for one person; \$12, \$13, \$15, and \$17 per day, including meals for two persons; according to size and location of room. Special weekly and monthly rates. Reduced rates from June 20 to July 10, also from September 1 to September 10.

Write or Wire. Mrs. Henrietta Gravuer Steiner, Manager.

DELIGHTFUL LIVING

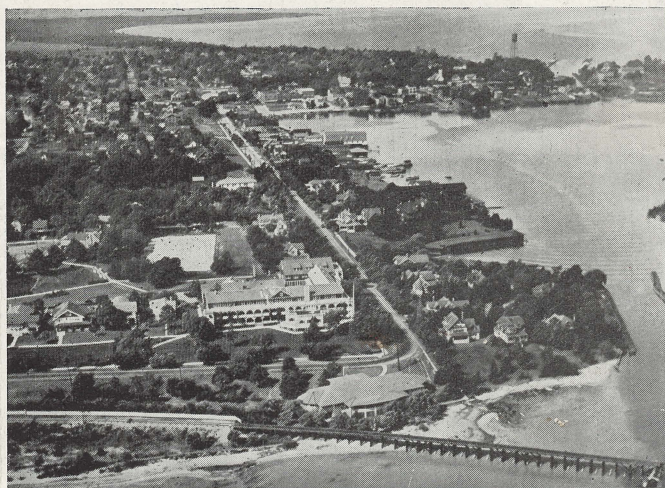
The Solarium, Lounge and Lobby, cheerful rooms beckon one to while away hours of relaxation. Our guests are made to feel warmly welcome and are quickly drawn into the informal life of the congenial groups. Daily concerts are rendered by a Trio of talented musicians.



We cater to a discriminating clientele.

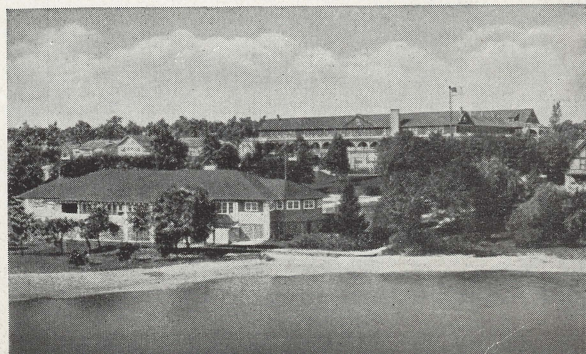


The spacious and inviting verandas offer a wonderful view of Lake Charlevoix.



Air view of Belvedere, showing the vastness of this beauty spot. Lake Michigan in background—Round Lake, a natural land-locked harbor, in center, and Lake Charlevoix in foreground.

Belvedere Casino, with its unusually large porch, located on the shores of Lake Charlevoix, is a delightful spot for dancing and other entertainment. It has a stage and seating capacity for five hundred, making it ideal for convention meetings.



Charlevoix and Belvedere are easily accessible by motor over good roads from all points. U. S. Highway 31 and State Highway 66 pass through the City.

MILEAGES TO CHARLEVOIX FROM

Detroit	273 miles	South Bend	330 miles
Lansing	224 "	Indianapolis	469 "
Grand Rapids	186 "	Cincinnati	502 "
Chicago	389 "	St. Louis	654 "



The Belvedere station of the Pere Marquette Railroad makes it possible for guests to leave the train in front of the Hotel.

MEMBERS OF THE
 American Automobile Association (AAA)
 West Michigan Tourist & Resort Association
 Ask Mr. Foster Travel Service