

BELVEDERE CLUB 2019 ARCHITECTURAL INVENTORY



Site: 45

Historic Name N/A

Year Built c. 1900

Architectural Style Queen Anne

This two-and-a-half-story cottage with its wrap-around front porch, corner tower, clipped gable roof, and Palladian window has typical Queen Anne massing and features. The southeast corner of the front porch originally was multi-sided to match the angled sides of the tower. The various diamond patterns in the upper sash of the windows were not there in 2009 and it is unknown if they were there originally. It appears that the circular windows in the tower and the vertical boards above the Palladian window have been added since 2007, and the siding has been changed. The dormers in the north slope of the main roof are not original.

Significant Features

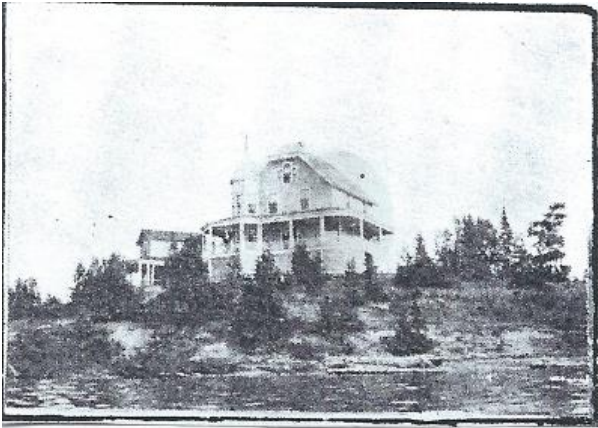
- Two-and-half story massing with clipped gable roof and corner tower with multi-sided roof.
- Full-width wrap-around front porch with Doric columns.
- Palladian window in the gable end.

Condition

The cottage is generally in good repair with no apparent issues.

ADDITIONAL PHOTOS

1907



1907

2019 – East



West



North

