

## BELVEDERE CLUB 2019 ARCHITECTURAL INVENTORY



**Site:** 411                      **Historic Name** N/A  
**Year Built**        c. 1900  
**Architectural Style**     Queen Anne

The steeply pitched cross gable roof massing of this two-story cottage with Palladian type windows in the shingle sided gable ends, cornice at the eaves of the main and porch roof, and its wrap around front porch supported by Doric columns are all characteristic of the Queen Anne style. The two angled bays at the first floor with large center windows with an angled muntin pattern in the shorter upper sash, the one-over-one windows in the second floor, and attic windows with the multi-pane upper sash are also typical of the style.

### Significant Features

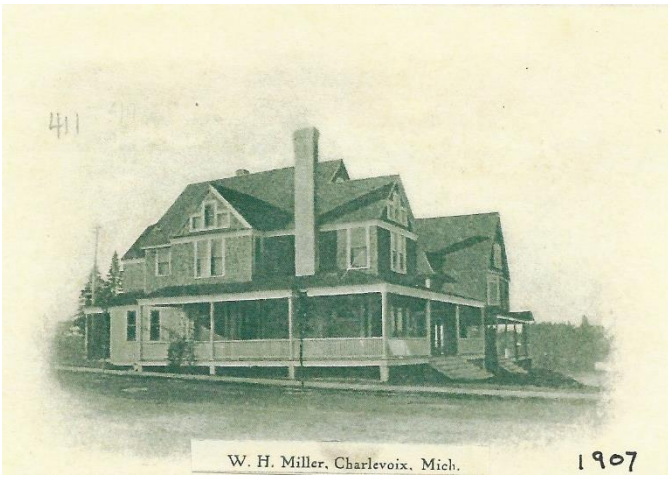
- Two- story steeply pitched cross gable roof massing with cornice trim in the eaves and Palladian style windows in the gable ends.
- Wrap around front porch with wide central stair, Doric columns, wood railing and shallow pitch hip roof.
- Multi-sided bay windows at first floor with large central windows with angled muntin pattern in the shorter upper sash.
- One-over-one windows in the second floor.
- Narrow clapboard siding at the first floor, large brick chimney on south side.

### Condition

The cottage appears to be in good repair with no apparent issues. It retains most of its original appearance.

ADDITIONAL PHOTOS

1907 and 1916



2019 – South



West and north



East and north

