

BELVEDERE CLUB 2019 ARCHITECTURAL INVENTORY



Site: 507 **Historic Name** N/A
Year Built c. 1900
Architectural Style Shingle style

This two-and-a-half story cottage has a steeply pitched side gambrel roof with gable front wall dormers on the south façade and a multi-sided pyramidal corner tower. The east gable end has a bowed wall above a large window with multiple panes in the upper sash. The deep wrap around front porch with curved corner around the tower, pediment over the stairs and Doric columns on a shingle clad knee wall are also typical of the style. The first floor has narrow clapboard siding and there is shingle siding at the second floor and gable ends. The first-floor windows and doors have multiple panes which are typical for the era.

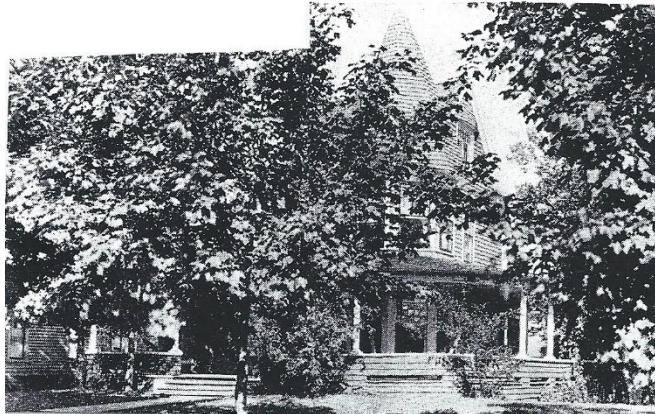
Significant Features

- Steeply pitched side gambrel roof with multi-sided corner tower and gable front wall dormers. Bowed wall at the top of the east gable end over a decorative window.
- Wrap around front porch with curved corner, pediment over the stair, shingle clad knee walls, Doric columns, shallow pitch roof.
- Narrow clapboard siding at first floor, shingle siding above with wide trim board at bottom of gable.

Condition

The cottage appears to be in good repair, no apparent issues. It retains most of its original appearance.

ADDITIONAL PHOTOS - 1907 and unknown



2019 – South and west



North and east

