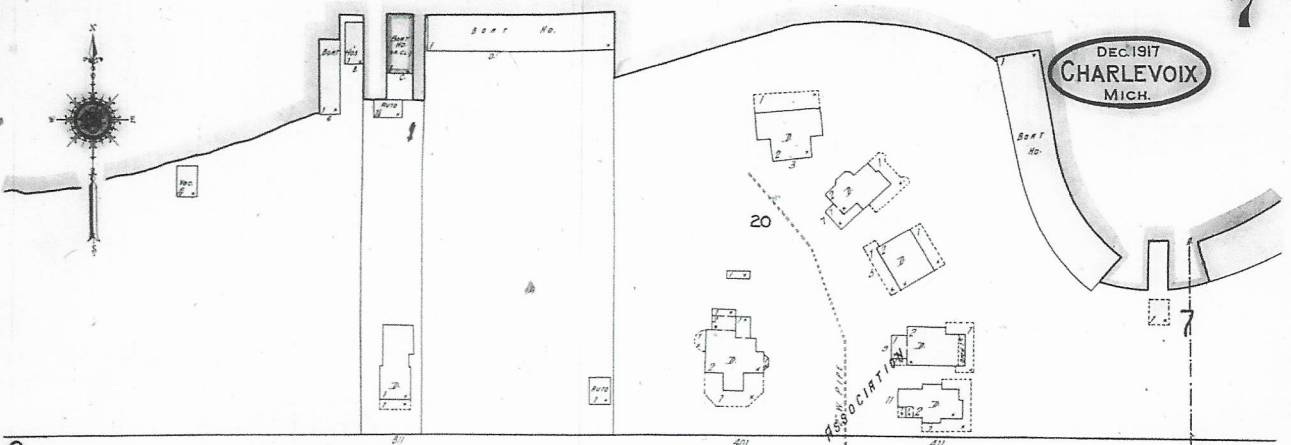
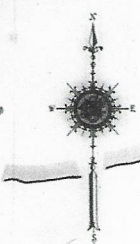


R O U N D L a k e

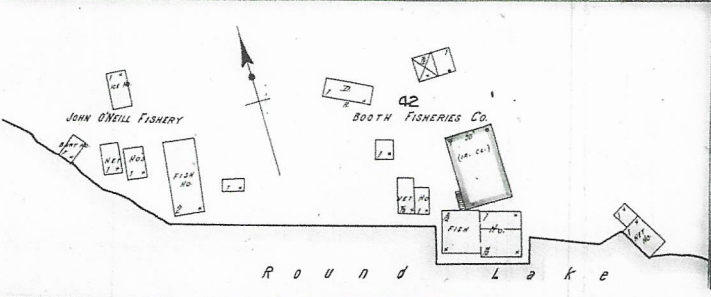
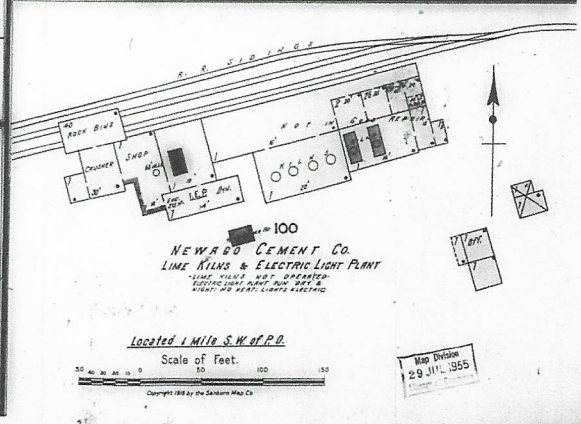
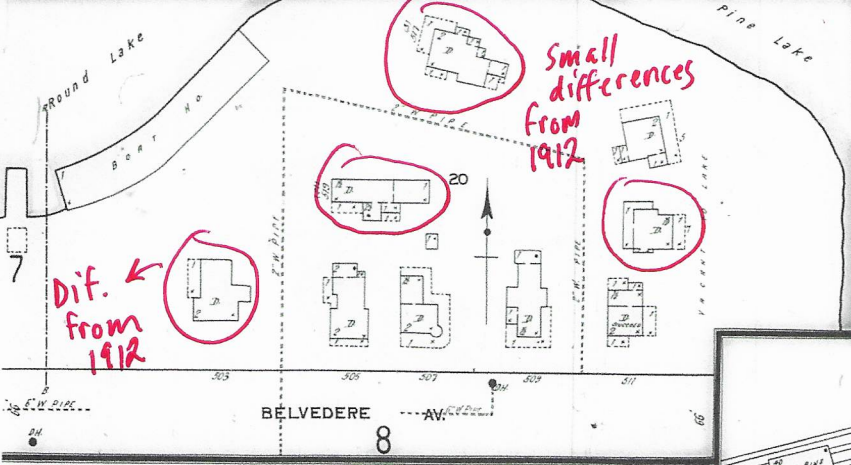
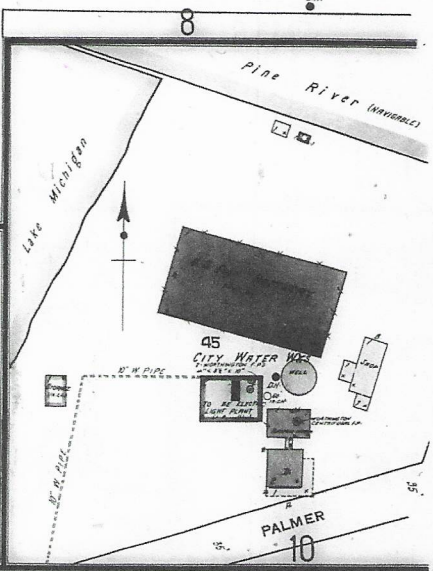
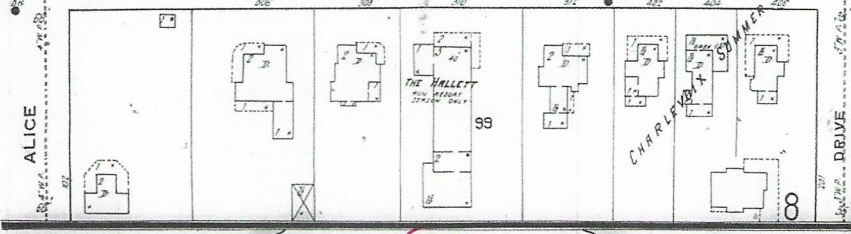
7

DEC. 1917  
CHARLEVOIX  
MICH.



6

BELVEDERE AV.





DEC. 1917  
CHARLEVOIX  
MICH.

All buildings on this sheet excepted  
except as shown only except the Belvedere  
by which is care-taken dwelling  
in summer time

BELVEDERE AV.

FERRY AV.

WADSWORTH AV.

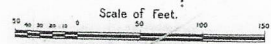
RESORT PARK

PAVILION PARK

WHITTIER AV.

DRIVE

Scale of Feet.



CHARLEVOIX SUMMER HOME  
FRESH WATER MARSH  
LOCALITY OF CHARLEVOIX, MICH.



→ Gone in 1927

→ Not on 1912 Map.

→ Cottage Missing from 1912

Map Division  
29 JUL 1955